

# ACCELERATED CORROSION TEST FOR THE QUALITATIVE EVALUATION OF CORROSION IN CONCRETE

## **FERREIRA, Carla Regina**

Metallurgical Engineer, UEMG, João Monlevade, Minas Gerais, Brazil.  
Researcher at the Laboratory of Ceramic Materials, Faculdade de Engenharia da Universidade do Estado de Minas Gerais, Av. Brasília, nº1304, Baú. João Monlevade/MG – Brazil, ZIP 35930-314  
Email: carlaregina\_metal@yahoo.com.br

## **TAVARES, Sheron Stephany**

Metallurgical Engineer, UEMG, João Monlevade, Minas Gerais, Brazil.  
Researcher at the Laboratory of Ceramic Materials, Faculdade de Engenharia da Universidade do Estado de Minas Gerais, Av. Brasília, nº1304, Baú. João Monlevade/MG – Brazil, ZIP 35930-314,  
Email: sheron\_tavares@yahoo.com.br

## **TEIXEIRA, Ricardo Luiz Perez**

Professor, Chemical Engineer. Dr. Metallurgical and Materials Engineering. Universidade Federal do Rio de Janeiro, Rio de Janeiro, Brazil. Researcher at the Laboratory of MATCIME, Universidade Federal de Itajubá - Campus Avançado de Itabira  
Rua Irmã Ivone Drumond, 200, sala 405,  
Distrito Industrial II Itabira – MG, Brazil, ZIP 35903-087  
Email: ricardo.luiz@unifei.edu.br

## **GOUVEIA, Leonardo Lúcio de Araújo**

Professor. Geographer, MSc. Geography. Universidade Federal de Minas Gerais, Belo Horizonte, Brazil. Researcher at the Laboratory of Ceramic Materials, Faculdade de Engenharia da Universidade do Estado de Minas Gerais,  
Av. Brasília, nº1304, Baú. João Monlevade/MG – Brazil, ZIP 35930-314  
Email: gouveialeo@yahoo.com.br

## **OLIVEIRA, Carlos Augusto de Souza**

Professor. Civil Engineer. Dr., Metallurgical and Mining Engineering. Universidade Federal de Minas Gerais, Belo Horizonte, Brazil. Researcher at the Laboratory of MATCIME, Universidade Federal de Itajubá - Campus Avançado de Itabira,  
Rua Irmã Ivone Drumond, 200, sala 405, Distrito Industrial II Itabira – MG, Brazil, ZIP 35903-087  
Email: carlosoliveira@unifei.edu.br

## **ABSTRACT**

This paper is devoted to simulate the behavior of reinforced concrete in saline solution through the accelerated corrosion test. During this test, this method was evaluating the behavior of the steel bars that reinforce concrete for corrosion, according to the NACE 0775 standard. After the corrosion test, the steel bars were cleaned and dried according to the ASTM A380 standard and evaluated according to the NACE RP 0775, NACE SP0308, and NACE SP0187 standards. From the results obtained, the steel bars concrete showed

high corrosion rates with structural impairment of the metal armor according to the NACE standards.

**Key words:** concrete, steel, accelerated corrosion test, electrochemistry.

## INTRODUCTION

For many years, it was believed that concrete with reinforcement structures would have a reasonable and durable life span. The conditions created by the concrete would have enough physical and chemical resistance against corrosion. However, recently the resistance and the durability of concrete are questioned due to the variety of exposure conditions. The main cause of problems in concrete structures is the corrosion on the steel bars, located inside reinforced concrete, which can consequentially decrease the mechanical strength of the reinforced concrete. Since the beginning of the last century, losses caused by decayed material, repairs to the structure, compromised structural stability, and high incidences of corrosion make that make corrosion armor a great pathological indicator.

This paper aims to simulate the behavior of reinforced concrete in marine environment, which is strongly corrosive, and to evaluate corrosion rates in the marine atmosphere.

Reinforced concrete is one of the most common materials uses in construction. Reinforced concrete differs from standard concrete because it receives a metallic armor that improves the strength of the concrete when it undergoes tensile stresses, while standard concrete resists compressive forces better. The connection made between the concrete and the steel bar is promoted by adhesion of the cement to the steel and various mechanical effects [13].

The electrochemical corrosion process of steel in concrete occurs for many reasons. In absence of external agents, the concrete layer acts as a protective cover for the alkaline steel and is involved with an intact passive layer. However, when there is an external agent interfering, the electrochemical stability is compromised, and thus signs of deterioration will be present [4-10].

The different chemical environments characterize the chemical factors, exhibiting a variety of corrosive chemical substances, such as sulfuric acid and hydrochloric acid [11-15]. Carbonation and chloride ions are the most common and destructive ways that induce corrosion to the steel bars.

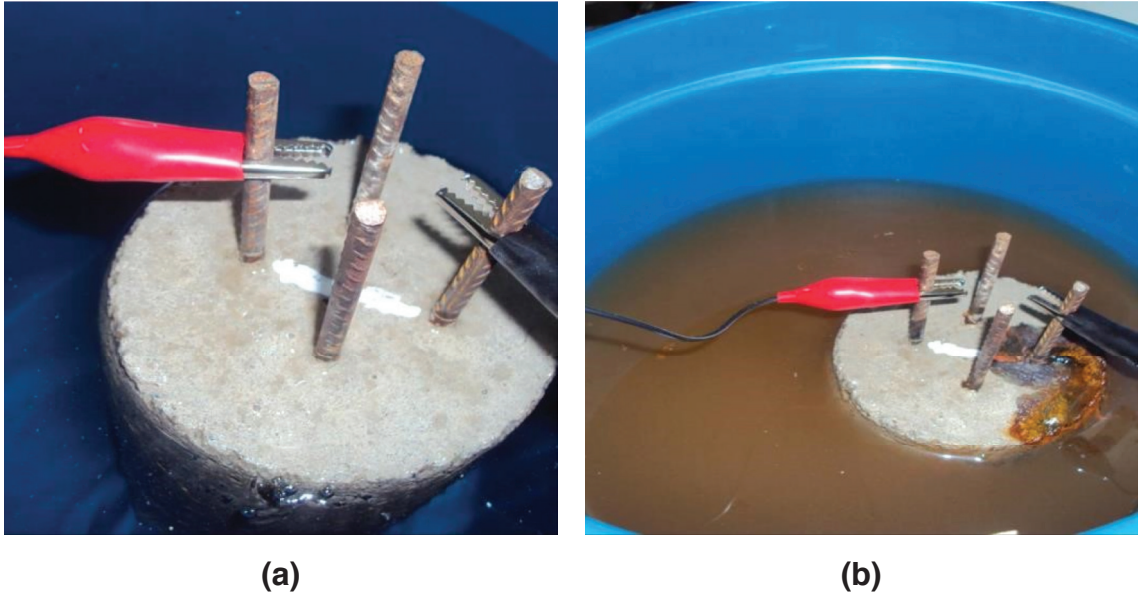
The corrosion test is an accelerated corrosion [16,17] method developed by Lima [18], HELM / UFRGS, from a similar test conducted by Varela and Spinoza [19], and the test has undergone several modifications, as Seliestre et al [20, 21] Carvalho et al [22] and Kirchhein et al [23]. The corrosion test evaluates the effect of corrosion on a material by measuring the weight loss after the test. It also allows observation of the progression of the corrosion current, which is crucial in measuring the dynamics of the corrosion process.

## MATERIAL AND METHODS

This experiment was executed using the accelerated corrosion test, which consists of a partial immersion of the concrete specimen, containing CA-60 steel bars with a diameter of 6 mm and a length of 17 cm, in a saline solution containing 35 grams of NaCl per liter of water, Fig. 1. A potential difference occurred between the steel bars in each specimen and a power supply, which provided a constant voltage. The cathode was generated in the steel bars, which promoted the migration of chloride ions from the solution to the area

adjacent to the metal, where accelerated oxidation reactions happened by electron loss. In this experiment, it was shown that a constant 16.5 V over a period of 40 hours was enough to allow evaluation of weight and thickness loss in the metal bars.

**Figure 1: (a) the sample with applied voltage - (b) The sample after 24 hours of testing**

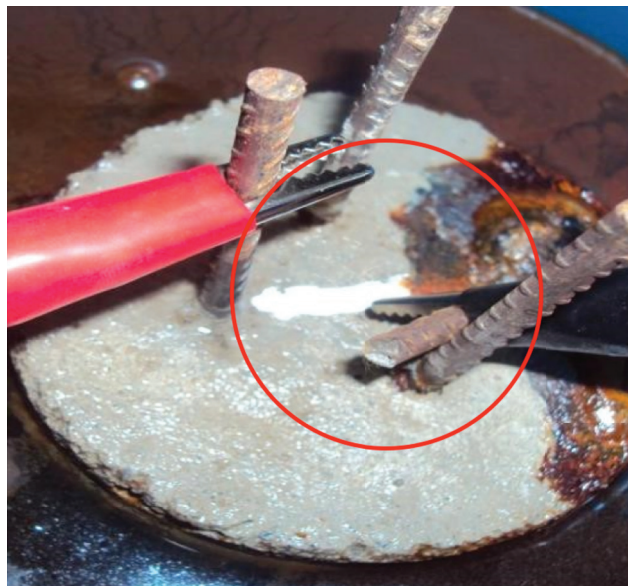


**Source:** applied research (2012)

After 40 hours, the specimen was cured in 20 days. After the curing process, the block was weighed, and then broken to analyze the metal bars. The specimen was cleaned using a solution of 23% sulfuric acid and then was ground, to determine how much material thickness was lost.

Fig. 2 shows the steel bar, which corroded more. This was due to greater contact with the saline solution that this bar was subjected to.

**Figure 2: Sample after 40 hours of testing**



**Source:** applied research (2012)

## RESULTS AND DISCUSSION

An analytical digital balance was used to evaluate the loss of mass. The initial weight of the concrete specimen was  $(3.56 \pm 0.01)$  kg. After the corrosion test, the mass of the concrete was  $(3.50 \pm 0.01)$  kg. It was shown that corrosion to the concrete was considerable as there was significant weight loss.

The steel used in this experiment was GG 60 steel, which had a caliper-measured dimension of  $(6.00 \pm 0.05)$  mm diameter and  $(170.00 \pm 0.05)$  mm length. After subjection to the corrosion test, the steel bars were ground and stripped. There was a decrease of  $(1.22 \pm 0.05)$  mm or  $\Delta m = 24.6 \times 10^3$  mg, which was directly from corrosion. To calculate the corrosion taxes, the following formula was first used to calculate the mass loss over time, as shown below.

$$mmpy = 13.56 \times \Delta m / (S \times t \times \rho)$$

Where: mmpy = loss in thickness, in mm / year;  $\Delta m$  = mass loss in mg; S= exposed area in inches; t = time of exposure in hours;  $\rho$  = specific mass of the material in g/cm<sup>3</sup>.

The loss of mass over time T = 267 mm/year was found, so it was possible to calculate the uniform corrosion rate that quantifies the loss in thickness, as shown below.

$$S = \Delta m \times 365 / (A \times t \times \rho)$$

Where : T: uniform corrosion rate;  $\Delta m$ : mass loss in mg; A: exposed area in mm<sup>2</sup>; t: exposure time in days;  $\rho$ : specific mass of the material in g/cm<sup>3</sup>; K: constant (87.6).

With this result, the level of corrosion suffered by the bar could be classified according to NACE standard (Table 1), which ranks by as severity of corrosion.

**Table 1:** The Standard NACE - RP0775 determines the classification of corrosivity:

UNIFORM CORROSION RATE (mm/Year)	CORROSIVITY
< 0.025	LOW
0.025 a 0.12	MODERATE
0.13 a 0.25	HIGH
> 0.25	SEVERE

Source: NACE Standard RP 0775(4)

## CONCLUSION

The corrosion test provided the severity of corrosion of reinforced concrete at rate of 267 mm/year according to the NACE RP 0775 standard. This experiment proved the need to manufacture steel with a higher resistance to corrosion using additions of alloying elements, and the creation of new forms of protective coatings and inhibiting elements. Further possibilities of concrete can be subjected to the accelerated corrosion test, with new results that may be compared in future research.

## ACKNOWLEDGMENT

This research was supported by Fapemig, MATCIME-UNIFEI, UNIFEI and UEMG.

## REFERENCES LITERATURE

- [1] NBR 12655 (Concreto de cimento Portland - Preparo, controle e recebimento – Procedimento), ABNT, Rio de Janeiro (2006).
- [2] NBR 6118 (Projeto de estruturas de concreto – Procedimento), ABNT, Rio de Janeiro (2007).
- [3] NBR 6118 (Projeto de estruturas de concreto – Procedimento), ABNT, Rio de Janeiro (2003).
- [4] NACE RP 0775 (Preparation, Installation, Analysis, and Interpretation of Corrosion Coupons in Oilfield Operation), NACE International: Standard Recommended Practice (2005).
- [5] ASTM - American Society for Testing and Materials. Annual book of ASTM Standards (Standard practice for cleaning, descaling and passivation of stainless steel parts, equipment and systems), (Revision) ASTM A 380, Philadelphia (1996).
- [6] NACE SP0308-2008 (Inspection Methods for Corrosion Evaluation of Conventionally Reinforced Concrete Structures Highways and Bridges) (2008).
- [7] NACE SP0187-2008 - formerly RP0187 (Design Considerations for Corrosion Control of Reinforcing Steel in Concrete Highways and Bridges) (2008).
- [8] A. G. Graeff, A. S. Torres and L. C. P. Silva Filho (Comparison of corrosion accelerated tests performed in reinforced concrete structures using voltage and current induction) in: Life-Cycle Civil Engineering: Proceedings of the International Symposium on Life-Cycle Civil Engineering, IALCCE'08, held in Varenna, Lake Como, Italy, 11-14 (2008).
- [9] Jinbo Li, Jinxin Gong and Licheng Wang (Seismic behavior of corrosion-damaged reinforced concrete columns strengthened using combined carbon fiber-reinforced polymer and steel jacket), Construction and Building Materials, Volume 23, Issue 7, 2653–2663 (2009).
- [10] Matthew D. Pritzl, Habib Tabatabai and Al. GHORBANPOOR (Laboratory Evaluation of Select Methods of Corrosion Prevention in Reinforced Concrete Bridges), International Journal of Concrete Structures and Materials, v. 8, n. 3, 201-212 (2014).

- [11] J. B. de Souza and E. P. de Deus (Damage Mechanics Applied for Steel Reinforcements in Concrete Structures under Corrosion), *Procedia Materials Science*, v. 3, 2000-2005 (2014).
- [12] Inamullah Khana, Raoul François and Arnaud Castelb (Prediction of reinforcement corrosion using corrosion induced cracks width in corroded reinforced concrete beams), *Cement and Concrete Research*, Volume 56, 84-96 (2014).
- [13] S. Ahmad (An experimental study on correlation between concrete resistivity and reinforcement corrosion rate) *Anti-Corrosion Methods and Materials*, Vol. 61 Iss: 3, 158-165 (2014).
- [14] J. Wei, X.X. Fu, J.H. Dong and W. Ke (Corrosion evolution of reinforcing steel in concrete under dry/wet cyclic conditions contaminated with chloride), *Journal of Materials Science & Technology*, v. 28, n. 10, 905-912 (2012).
- [15] Md. S. Badara, K. Kupwade-Patilb, S. A. Bernalc, J. L. Provisc and E. N. Allouchea (Corrosion of steel bars induced by accelerated carbonation in low and high calcium fly ash geopolymer concretes), *Construction and Building Materials*, Volume 61, 79-89 (2014).
- [16] M. G. Sohail, S. Laurens, F. Deby and J. P. Balayssac (Significance of macrocell corrosion of reinforcing steel in partially carbonated concrete: numerical and experimental investigation), *Materials and Structures*, Volume 48, Issue 1-2, 217-233 (2015). [17] A. del Grossoac and F. Lanatab (A long-term static monitoring experiment on R.C. beams: damage identification under environmental effect), *Structure and Infrastructure Engineering: Maintenance, Management, Life-Cycle Design and Performance*, Volume 10, Issue 7, 911-920 (2014).
- [17] T. J. da Silva, G. Ferreira and J. F. Dias (Influência de variáveis nos resultados de ensaios não destrutivos em estruturas de concreto armado), *Ciência & Engenharia*, V. 22, No.1, 103-113 (2013)
- [18] H. Varela and L. V.Espinoza (Penetrabilidad De Iones Cloruros En Morteros Con Y Sin Revestimiento). In: VII Jornadas Chilenas del Hormigón y I Jornada Lationamericana del Cimento Y Hormigón, Curso: Avances Tecnológicos En El Uso De Cementos Y Hormigones, 1988, Santiago De Chile. Anais... Santiago De Chile: Instituto Profesional De Santiago, 1988. P. 82-91.
- [19] F. Rocha, H. Campos, T. S. de Andrade, A. Roquitski and M. H. Medeiros (Influência da espessura de revestimento e da contaminação por cloretos nas leituras de potencial de corrosão de armaduras) *REEC - Revista Eletrônica de Engenharia Civil*, v. 8, n. 2, 43-53 (2014).
- [20] F.P. Selistre, S.L. Gastal, J.L. Campagnolo (Estudo de Técnicas para Reversão do Processo Corrosivo em Estruturas de Concreto Contaminadas com Cloretos). In: VI Salão de Iniciação Científica e III Feira De Iniciação Científica, Porto Alegre. Anais... Porto Alegre: Leme/ UFRGS (1994).
- [21] A. G. L. Carvalho, A. J. Hesko, B. A. Gnann, B. G. Bonfim, E. C. Estambasse, J. P. V., R. A. H. and F. A. Ferreira (Corrosão associada a fatores mecânicos) *Revista de Tecnologia e Ciência do SENAI*, v. 1 (2014).

[22] A.P. Kirchheim, V. Pasa, D. C. C. Dal Molin, L. C. P. Silva Filho (Avaliação de revestimentos de proteção do aço no controle da corrosão das armaduras em concretos brancos) in VII Congresso Latinoamericano De Patologia De La Construccion, X Congreso De Control De Calidad En La Construccion, 2005, Asunción, Paraguai. Anais... Conpat (2005).